

# S R I S H T I

by



**ARYA HOMES**

Building Trust



## Arya Homes – Building Trust

Introducing Arya Homes from the house of Patwari Group - one of the most reputed business Groups of West Bengal grown from our very own Jhargram. Mr. Ashok Kumar Patwari, director of Aryavrata Steel Pvt Ltd., with his determination and perseverance has taken the company to new heights of success in the last two decades.

Today we have a family of more than 250 employees who work diligently to help the company achieve it's goals. We value our employees immensely and ensure their growth.

We have now decided to expand into Real Estate to establish the same respect and trust among the residents of Jhargram and other parts of West Bengal.

ARYA HOMES is our diversification into Real Estate and SRISHTI is our first (G+4) Commercial plus Residential Project.

**SRISHTI** meaning creation is our first space creation enterprise that you would be delighted to live in. Modernity meets nature at srishti. The project is built midst of nature with advanced interior and exterior. Ground Floor is strategically laid out for commercial use and car parking and 1st, 2nd, 3rd, and 4th floors have 2 BHK flats with beautiful views, alluring greenery and advanced amenities that makes for a peaceful wholesome living.

## Exceptional Facilities and Amenities



### Electricity:

- Adequate supply of power and electricity.
- LT panel for appropriate power factor correction.
- Adequate earthing provisions for total protection of equipment.



### Power Back up:

- Adequate power back up through DG set (housed in acoustically treated enclosures) with automatic changeover on failure of main power.



### Lifts:

- Fully automated, high speed lift.



### Safety:

- 24/7 security through CCTV cameras.
- Adequate fire preventive measures taken for safety.
- Fire extinguisher strategically placed throughout the building.



### Flooring:

- Main entrance lobby: Granite / vitrified tiles.
- Lobby of all floors: Vitrified tiles.
- Toilets and pantry: Vitrified tiles / granite.



### Civil Specification:

- RCC reinforced frame structure.
- Load bearing capacity of upto 500 kg per m2.
- Earthquake proofing for main structure as per National Building Code.



### Architecture:

- Designed by renowned architecture company - Delta Consultancy.



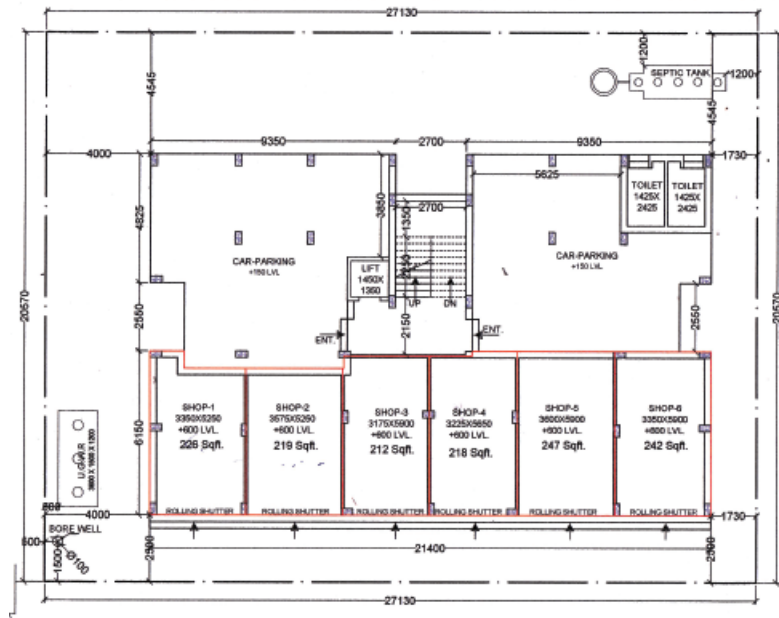
### Other Facilities:

- 24/hr Water supply.
- Centrally located with school, colleges, hospitals and markets in it's immediate vicinity.
- Adequate Car Parking Area.
- Lush green terrace gardens.

\*The above mentioned amenities and facilities are subject to change at the sole discretion of the promoter and promoter shall not be liable to any claim of any nature rising of out of such changes. .

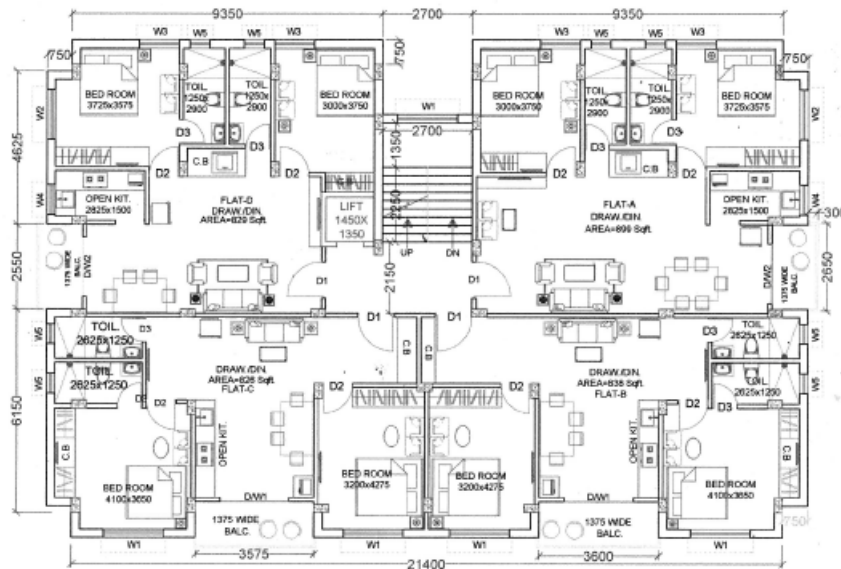
## FLOOR PLAN (GROUND FLOOR)

SIX COMMERCIAL SHOPS WITH PARKING



## FLOOR PLAN (1<sup>ST</sup>, 2<sup>ND</sup>, 3<sup>RD</sup> & 4<sup>TH</sup> FLOOR)

LUXURIOUS 2 BHK FLATS IN EACH FLOOR



\*The above floor plans are for reference purpose only. The actual size and layout may vary.

# SRISHTI ROUTE MAP

TOWARDS RAILWAY SIDING

CANAL

TOWARDS STADIUM

JHARGRAM TO LODHASOLI HIGHWAY

PROJECT  
SRISHTI

BOI

CANAL

NEW BUS STAND ROAD

JHARGRAM  
NURSING HOME

SCHOOL  
C F ANDREWS  
SCHOOL

KUMUD KUMARI  
INSTITUTION

# Contact

---

**FOR BOOKING ENQUIRY PLEASE CONTACT**

Mr. Nishant Patwari : +91 8420864666  | Mr. Hari Setua : +91 8509258477 

---

**Group Head Office:**

**Arya Homes**

**C/O Aryavrata Steel Pvt. Ltd. 6th Floor, 602, Kolkata - 700001**

**Ph : 033 22318020**

**Project Office:**

**Patwari Brothers (Near Aranya Sundari Guest House)**

**Ghoradhara, Jhargram, West Bengal - 721507**




**Project Address:**

**Raghunathpur, Mauza - Jangal Khas (Near Bank Of India)**

**J. L. No. 395, Dag No. 382, 200/1, P. S. Dist. - Jhargram**

**West Bengal - 721507**

---

 [www.thearyahomes.com](http://www.thearyahomes.com)  [contact@aryahomes.com](mailto:contact@aryahomes.com)  [The Arya Homes](https://www.facebook.com/TheAryaHomes)

